

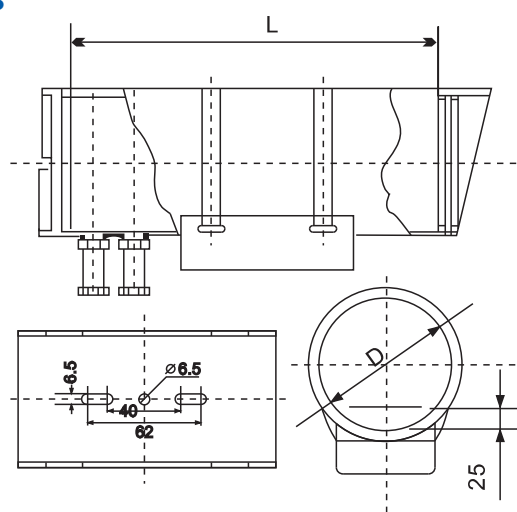
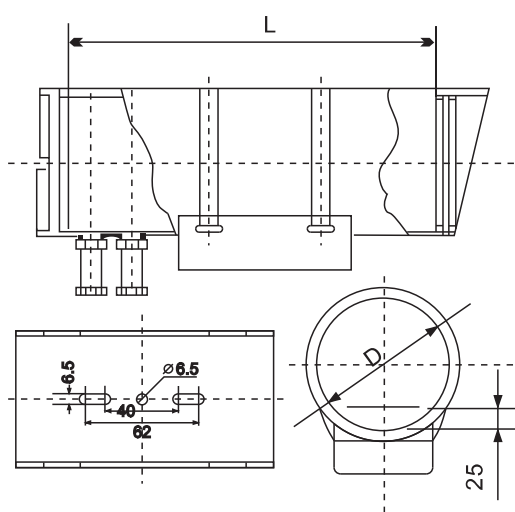


HL-E8003D

HL-E8004D



Dimensions



Main Features

With air-conditioning or Without (optional) ♦
With two outlet hole ♦
Working Temperature: -40°C~+65°C ♦

With air-conditioning or Without (optional) ♦
With two outlet hole ♦
Working Temperature: -40°C~+65°C ♦

♦ Stainless steel Material(304/316L), Toughened glass
♦ Can built-in Fixed lens or varifocal lens
♦ Certification: ExdⅡBT6, The explosion-proof certificate No.: CNEx08.1339, GB3836.1-2000, GB3836.2-200

♦ Stainless steel Material(304), Toughened glass
♦ Can built-in Fixed lens or varifocal lens
♦ Certification: ExdⅡBT6, The explosion-proof certificate No.: CNEx08.1339, GB3836.1-2000, GB3836.2-2000

Introduction

HL-E8003D(HL-E8003D with air-condition) is a Explosion-proof housing, it can fit for any box cameras, usually we suggest box camera with varifocal lens. With invisible wiper. Advantages: tempered glass, wide diameter, wide angle of view. Lens with drawer panels can be pulled in & out for easy installation. Application: ⅡA, ⅡB, ⅡC, 1 and 2 areas of T1-T6 environment.

HL-E8004D(HL-E8004D with air-condition) is a Explosion-proof housing, it can fit for any box cameras, usually we suggest box camera with varifocal lens. With invisible wiper. Advantages: tempered glass, wide diameter, wide angle of view. Lens with drawer panels can be pulled in & out for easy installation. Application: ⅡA, ⅡB, ⅡC, 1 and 2 areas of T1-T6 environment.

Specifications

Camera				
Model	HL-E8003D	HL-E8003D with air conditioner	HL-E8004D	HL-E8004D with air conditioner
Ex-mark	ExdⅡBT6		ExdⅡBT6	
Certificate	CNE×08.1399		CNE×08.1399	
Material	304, 316, 316L, stainless steel optional		304, 316, 316L, stainless steel	
IP Grade	IP67		IP67	
Outside Dimension	325×107mm	380×107mm	380×131mm	132×435mm
Inside Dimension	Φ280×101mm	Φ230×101mm	Φ335×125mm	Φ285×125mm
Weight	5.3Kg	5.5Kg	6.0Kg	6.7Kg
Number of round holes	2pcs		2pcs	3pcs
The outlet hole specification	M20×1.5		M20×1.5	
Power supply	DC12V2A	DC12V4A	DC12V2A	DC12A
Environment temperature	-30°~+60°	-40°~+65°	-30°~+60°	-40°~+65°

Accessories		
Model No.	Specification	Picture
HL-Ex80(Big)	Cast aluminium, Standard: GB3836.1, GB3836.2 Ex-proof certificate: CNE×09.0240 Available space: 350×240×117mm 5 connection ports(output & input) Inner diameter of Ø20mm×1.5 and 6mm Ex-proof marking: ExdⅡCT6	
HL-Ex80(Middle)	Cast aluminium, Standard: GB3836.1, GB3836.2 Ex-proof certificate: CNE×09.0240 Available space: 258×198×80mm 5 connection ports(output & input) Inner diameter of Ø20mm×1.5 and 6mm Ex-proof marking: ExdⅡCT6	
HL-Ex80(Middle)	Cast aluminium, Standard: GB3836.1, GB3836.2 Ex-proof certificate: CNE×09.0240 Available space: 220×165×75mm 3 output with inner diameter of Ø20mm×1.5 1 input with inner diameter of 1.5 Ex-proof marking: ExdⅡCT6	
HL-Ex80(Small)	Cast aluminium, Standard: GB3836.1, GB3836.2 Ex-proof certificate: CNE×09.0240 Available space: 125×119×58mm 1 input and 1 output with inner diameter of Ø20mm×1.5. Ex-proof marking: ExdⅡCT6	
HL-BNG1000	Full Stainless steel, ripple tube insert diameter of Ø20mm×1.5 or 6mm normally 1 meter(can custom made 1.5M, 2M) Suitable for active point. when using complex cable, one point needs at last 2-3 pcs tube Ex-proof marking: ExdⅡ	
HL-9011(Small)	Suitable for E8001/E8003D/E814A/E611H	
HL-9011(Biger)	Suitable for E8001/E8003D/E814A/E600H	

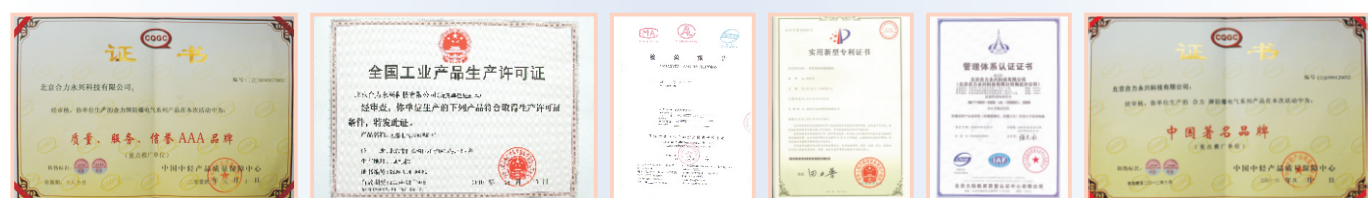
Note

Do not use clothes or any ordinary material to clean the camera cover since they may result in scratches
Specifications are subject to change without notice ♦

Packing List

♦ Explosion-proof Housing
♦ Accessories screws
♦ Manual CD
♦ Sticker

CERTIFICATION



Specifications are subject to change without notice.

ANSON (HK) Technology Company Limited
Shenzhen Enerson Technology Company Limited
Beijing Heliyongxing Technology Company Limited

Add: 4F, Block 5, Wuzi Industrial Park, Fada Road, Bantian, Longgang District, Shenzhen, China

Tel: +86-755-28188843
Fax: +86-755-28188834
Mail: info@cctv-ax.net
Http: www.cctv-ax.com
Http: www.bjhlyx.net