

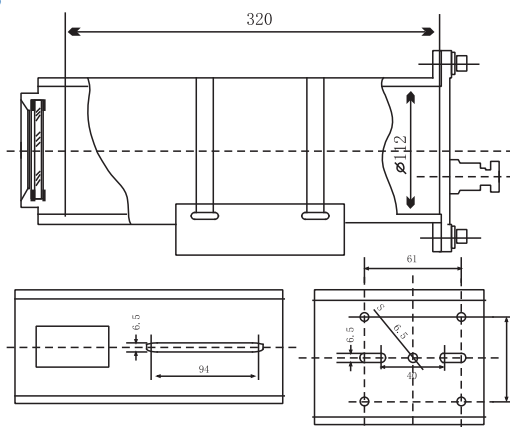
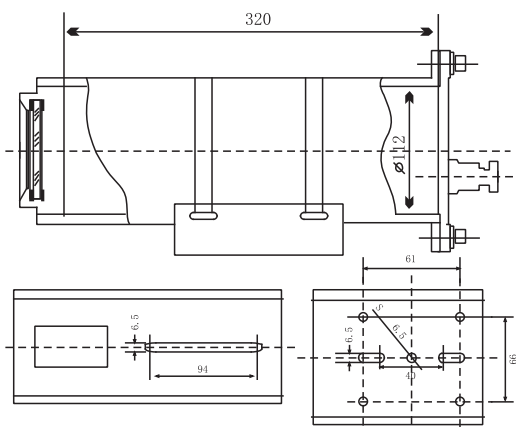


HL-E814A

HL-E814



Dimensions



Introduction

HL-E814A is an explosion-proof housing, it can fit for any box cameras, usually we suggest box camera with varifocal lens. With invisible wiper. Advantages: tempered glass, wide diameter, wide angle of view. Application: IIA, IIB, IIC, 1 and 2 areas of T1-T6 environment.

Main Features

- ◆ IP67
- ◆ Mark of Ex-plosion-proof: ExdIICT6
- ◆ Certification No. Of Ex-proof: CNE×08.1628
- ◆ Stainless steel 304.316.316L
- ◆ Built in: 1/3" SONY 700TVL Box Camera, 4-9mm varifocal lens

Specifications

	Camera	
Model	HL-E814A	HL-E814
Ex-mark	ExIICT6	
Certificate	CNE×08.1628	
Material	Stainless steel 304.316.316L(Optional)	
IP Grade	IP67	
Outside Dimension	340×130mm	400×165mm
Inside Dimension	280×100mm	305×115mm
Weight	3.5Kg	5.8Kg
The outlet hole number	2	
Cable entry's screw spec	G-3/4"/M20×1.5	M20×1.5
Power supply	DC12V;2A	
Working Temperature	-30°~+60°	
Wiper	Invisible wiper, Nanometer processing	

Accessories

Model No.	Specification	Picture
HL-Ex80(Big)	Cast aluminium, Standard: GB3836.1, GB3836.2 Ex-proof certificate: CNE×09.0240 Available space: 350×240×117mm 5 connection ports(output & input) Inner diameter of Ø20mm×1.5 and 6mm Ex-proof marking: ExdIICT6	
HL-Ex80(Middle)	Cast aluminium, Standard: GB3836.1, GB3836.2 Ex-proof certificate: CNE×09.0240 Available space: 258×198×80mm 5 connection ports(output & input) Inner diameter of Ø20mm×1.5 and 6mm Ex-proof marking: ExdIICT6	
HL-Ex80(Middle)	Cast aluminium, Standard: GB3836.1, GB3836.2 Ex-proof certificate: CNE×09.0240 Available space: 220×165×75mm 3 output with inner diameter of Ø20mm×1.5 1 input with inner diameter of 1.5 Ex-proof marking: ExdIICT6	
HL-Ex80(Small)	Cast aluminium, Standard: GB3836.1, GB3836.2 Ex-proof certificate: CNE×09.0240 Available space: 125×119×58mm 1 input and 1 output with inner diameter of Ø20mm×1.5. Ex-proof marking: ExdIICT6	
HL-BNG1000	Full Stainless steel, ripple tube insert diameter of Ø20mm×1.5 or 6mm normally 1 meter(can custom made 1.5M, 2M)Suitable for active point. when using complex cable, one point needs at last 2-3 pcs tube Ex-proof marking: ExdII	
HL-9011(Small)	Suitable for E8001/E8003D/E814A/E611H	
HL-9011(Biger)	Suitable for E8001/E8003D/E814A/E600H	
AX-9012(Biger)	Suitable for E8005/E8005A, Usually together with AX-9013, and used for E814/E8004D/KBA156 Housing Weight 3.5Kg, Length 500mm	
AX-9013	Together with AX-9012, used for E814/E8004D/KBA156 Weight 3Kg Length 200×160mm	

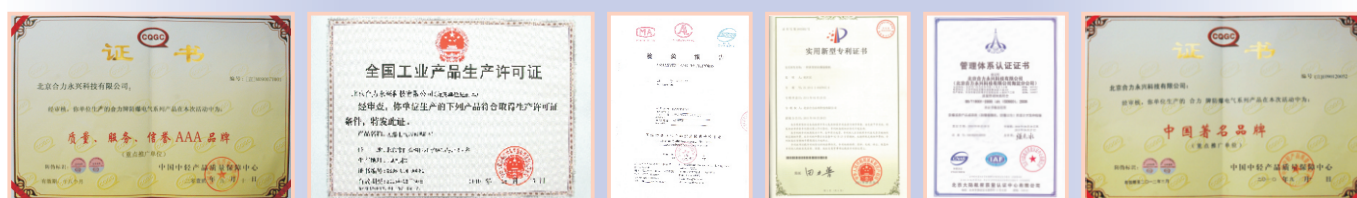
Note

- ◆ Do not use clothes or any ordinary material to clean the camera cover since they may result in scratches
- ◆ Specifications are subject to change without notice

Packing List

- ◆ Explosion-proof housing
- ◆ Accessories screws
- ◆ Manual CD
- ◆ Sticker

CERTIFICATION



Specifications are subject to change without notice.

ANSON (HK) Technology Company Limited
Shenzhen Enerson Technology Company Limited
 Beijing Heliyongxing Technology Company Limited

Address: 4F, Block 5, Wuzi Industrial Park, Fada Road, Bantian, Longgang District, Shenzhen, China

Tel: +86-755-28188843
 Fax: +86-755-28188834
 Mail: info@cctv-ax.net
 Http: www.cctv-ax.com
 Http: www.bjhlyx.net