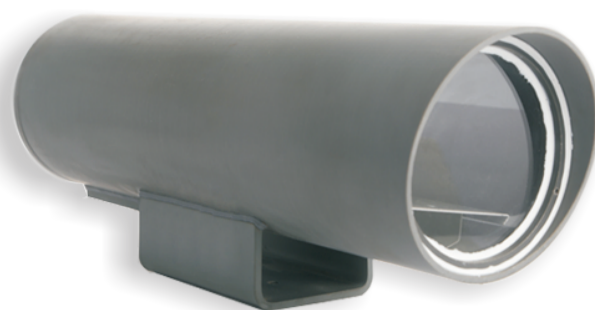
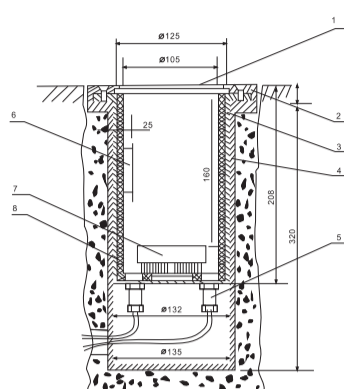
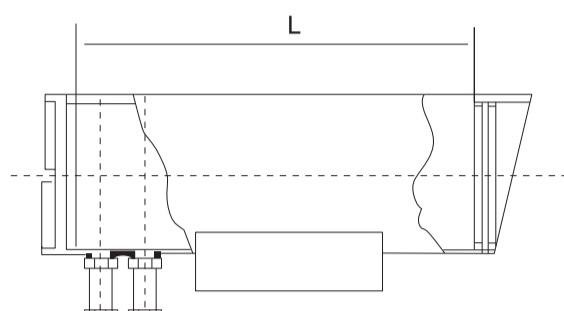




## HL-E600H Anti Chemical Corrosion Housing HL-E611H HL-E613H



### Dimensions



### Main Features

- ◆ Anti Chemical corrosion, IP68
- ◆ Working Temperature: -40°C~ +65°C
- ◆ Acid and alkali and anti-corrosion material
- ◆ Anti Chemical corrosion, IP68
- ◆ Working Temperature: -40°C~ +65°C
- ◆ Acid and alkali and anti-corrosion material

### Introduction

HL-E611H is a anti chemical corrosion housing, suitable smaller size box camera, advantage: Using a strong acid and chemical corrosion special engineering plastics, not only acid, chemical corrosion, and good flame retardant, electrical insulation properties, good chemical resistance, suitable for corrosive chemical environments, while insulation and invisible wiper options. A fully sealed structure, long-term work in chemically aggressive environments, completely prevent dust, water and corrosive gases and ensure the airtightness of its absolute performance.

HL-E613H is a anti chemical corrosion housing, suitable any box camera, advantage: Using a strong acid and chemical corrosion special engineering plastics, not only acid, chemical corrosion, and good flame retardant, electrical insulation properties, good chemical resistance, suitable for corrosive chemical environments, while insulation and invisible wiper options. A fully sealed structure, long-term work in chemically aggressive environments, completely prevent dust, water and corrosive gases and ensure the airtightness of its absolute performance.

### Specifications

Camera		
Model	HL-E611H	HL-E613H
PH value (at 60°C±20°C 5 hours)	40%NaOH±1g\m2(Sodium oxide) 40%HNO3±g\m2(hydrogen nitrate) 30%HSSO±1g\m2(Sulphuric Acid) 35%HCL±2g\m2(Hydrochloric acid) HF hydrogen fluoride Acetone soaking no beard hair: delaminating phenomenon	
Material	Special industrial plastic, organic glass	
IP Grade	IP68	
Inner space	Fixed or small size zoom lens	All kinds of lens
Outlet hole quantity, specification	2pcs M20×105	3pcs M20×1.8
Weight	1.5Kg	1.8Kg
Feature	Using strong acid and alkali resistance and chemical corrosion performance of special engineering plastics	

Accessories		
Model No.	Specification	Picture
HL-Ex80(Big)	Cast aluminium, Standard: GB3836.1, GB3836.2 Ex-proof certificate: CNE×09.0240 Available space: 350×240×117mm 5 connection ports(output & input) Inner diameter of Ø20mm×1.5 and 6mm Ex-proof marking: ExdIICT6	
HL-Ex80(Middle)	Cast aluminium, Standard: GB3836.1, GB3836.2 Ex-proof certificate: CNE×09.0240 Available space: 258×198×80mm 5 connection ports(output & input) Inner diameter of Ø20mm×1.5 and 6mm Ex-proof marking: ExdIICT6	
HL-Ex80(Middle)	Cast aluminium, Standard: GB3836.1, GB3836.2 Ex-proof certificate: CNE×09.0240 Available space: 220×165×75mm 3 output with inner diameter of Ø20mm×1.5 1 input with inner diameter of 1.5 Ex-proof marking: ExdIICT6	
HL-Ex80(Small)	Cast aluminium, Standard: GB3836.1, GB3836.2 Ex-proof certificate: CNE×09.0240 Available space: 125×119×58mm 1 input and 1 output with inner diameter of Ø20mm×1.5. Ex-proof marking: ExdIICT6	
HL-BNG1000	Full Stainless steel, ripple tube insert diameter of Ø20mm×1.5 or 6mm normally 1 meter(can custom made 1.5M, 2M)Suitable for active point. when using complex cable, one point needs at last 2-3 pcs tube Ex-proof marking: ExdII	
HL-9011(Small)	Suitable for E8001/E8003D/E814A/E611H	
HL-9011(Biger)	Suitable for E8001/E8003D/E814A/E600H	

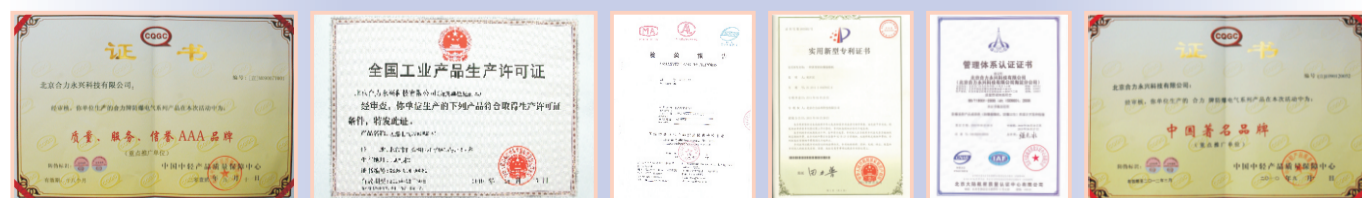
### Note

- ◆ Do not use clothes or any ordinary material to clean the camera cover since they may result in scratches
- ◆ Specifications are subject to change without notice

### Packing List

- ◆ Anti chemical corrosion housing
- ◆ Accessories screws
- ◆ Manual CD
- ◆ Sticker

### CERTIFICATION



Specifications are subject to change without notice.

**ANSON (HK) Technology Company Limited**  
**Shenzhen Enerson Technology Company Limited**  
 Beijing Heliyongxing Technology Company Limited

**Add:** 4F, Block 5, Wuzi Industrial Park, Fada Road, Bantian, Longgang District, Shenzhen, China

**Tel:** +86-755-28188843  
**Fax:** +86-755-28188834  
**Mail:** info@cctv-ax.net  
**Http:** www.cctv-ax.com  
**Http:** www.bjhlyx.net